

# RADCLIFFE HOUSE

Blenheim Court, Warwick Road,  
Solihull, B91 2AA

## SERVICED OFFICE SUITES FOR 2 - 250 PEOPLE

Contemporary | Efficient | Stylish



## MODERN AND VIBRANT WORKING ENVIRONMENT

- ▶ Newly refurbished serviced and managed suites in this Grade A building that offers excellent natural light, meeting rooms, state-of-the-art technology and on-site parking.
- ▶ Our all-inclusive, flexible packages provide you with all you need to start work quickly and affordably, with the ability to expand as your business grows.



Please contact us  
to arrange a viewing:

**01275 795 395**  
**sales@chadwickbc.co.uk**

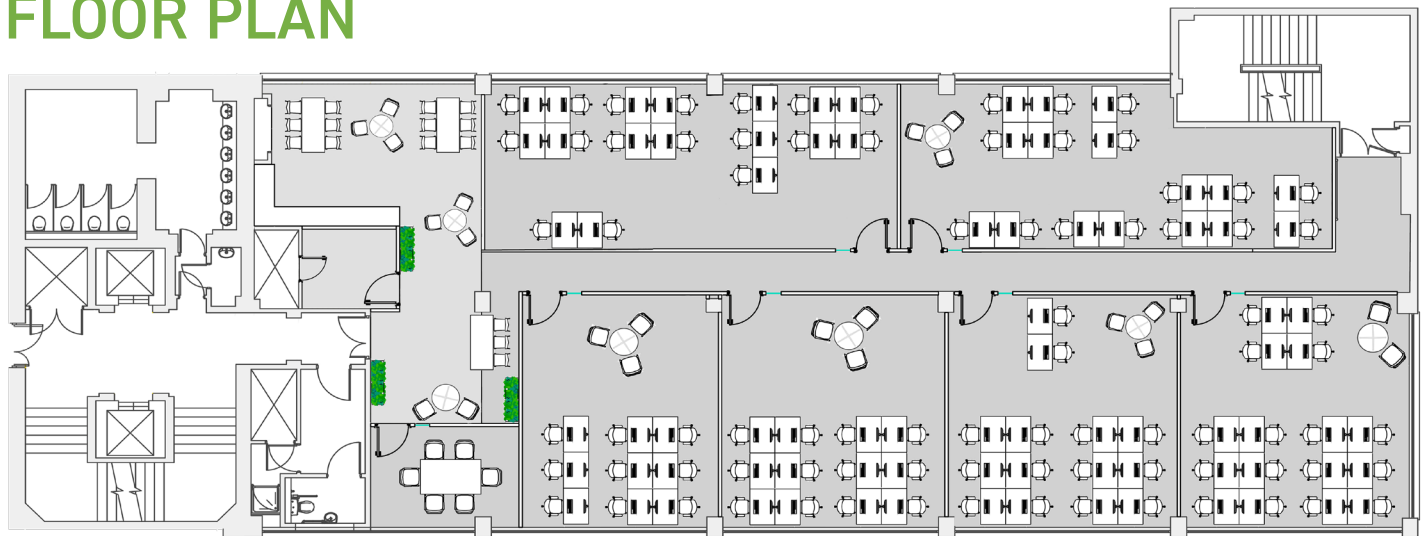


# A SIMPLE SOLUTION THAT MEETS ALL YOUR OFFICE NEEDS:

Our fully inclusive package provides you with the following:

- ▶ Rent, rates & service charges
- ▶ Utilities
- ▶ Furniture
- ▶ VOIP phone system
- ▶ High speed fibre optic internet
- ▶ Staffed main reception
- ▶ Bookable meeting facilities
- ▶ Break out areas
- ▶ Tea and coffee consumables
- ▶ Mail services
- ▶ Cleaning
- ▶ Security
- ▶ Statutory compliance
- ▶ Cycle storage & showers
- ▶ 24/7/365 access
- ▶ Maintenance & building services
- ▶ Insurance (building & Landlord contents)
- ▶ On-site parking (subject to availability)

## FLOOR PLAN



## LOCATION

- ▶ Radcliffe House is perfectly located within the centre of Solihull, surrounded by a large variety of retail and hospitality venues.
- ▶ Close links to the M42, M6 and Birmingham International Airport.
- ▶ Only 0.5 miles from Solihull train station, with a direct train to Birmingham and London.

